

# 101

C O P E N H A G E N



SCULPTURAL COMFORT AND ARTFUL PLANT POTS FOR THE GREAT OUTDOORS





## SCULPTURAL FORMS, EFFORTLESS COMFORT A BOLD COLLECTION OF MODERN OUTDOOR LOUNGE CHAIRS & STOOLS

Where sculpture meets sanctuary, our curated collection of lounge chairs and stools brings artful comfort to the outdoors. Inspired by the quiet beauty of Japanese Zen gardens and the bold spirit of 70s design, each piece offers both visual poetry and inviting ease, shaping spaces that feel as natural as they are intentional. Foku Lounge Chair with fluted lines and modular flexibility, this geometric form shifts effortlessly to suit the moment, adapting to gatherings both large and small. Big Foot Stool playful yet grounding, its bold cylindrical legs offer extra seating, a place to rest your feet, or a sculptural accent within the landscape. Toe Lounge Chair Flat fluid curves embrace the body in soft comfort, inviting you to linger as the breeze moves through. Toe Lounge Chair expressive and voluminous, it balances bold form with cocoon-like comfort, blending indoor luxury with outdoor ease. Crafted in Sunproof Olefin in a soft Warm Ash hue, the collection weathers sun, rain, and time with quiet resilience. Designed by Kristian Sofus Hansen & Tommy Hyldahl.



## REDEFINED DETAILS AND MONUMENTAL SHAPES ROOTED IN THE SCANDINAVIAN SOIL AND NOURISHED BY JAPANESE MINIMALIST AESTHETICS

101 Copenhagen is a Danish design brand founded in 2017. With a vision to honor exquisite quality and craftsmanship, the collection encompasses furniture, lighting and accessories in a timeless, yet modern design. With a true passion for materials and refined textures, organic shapes and colours, 101 Copenhagen presents the epitome of classics and must-have novelties for Scandinavian and international interior connoisseurs alike. The design of 101 Copenhagen is firmly rooted in the Scandinavian soil and nourished by Japanese minima-

list aesthetics. Sharing an emphasis on quality materials, techniques and traditions, the meeting between the North and the East is notable in the holistic collections of 101 Copenhagen. The design approach is dynamic and characterised by freedom of expression - creating unique and timeless pieces without compromising on playfulness and individuality. An attention to detail and a shared sense of aesthetics is what drives the two main designers of 101 Copenhagen, Tommy Hyldahl and Kristian Sofus Hansen. Merging their backgrounds and

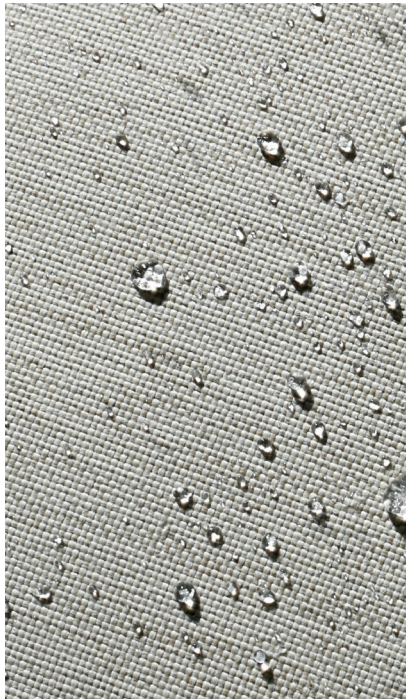
experiences from the fashion industry, the Royal Danish Academy of Fine Arts and travels in Japan respectively, a narrative of minimalist, sculptural and conceptual design is evident throughout the collections. Translating and transforming the simplistic inspiration from Japan in a Scandinavian context is all about honouring quality, heritage and materiality while never seizing to compromise on form and function. 101 Copenhagen is a curated selection of tactile, bold objects standing out in a crowd and gathers as a whole.



## HANDCRAFTED OUTDOOR LOUNGE FURNITURE – BUILT TO WITHSTAND TIME AND NATURE

Experience the perfect balance of timeless design, exceptional comfort, and unmatched durability with our premium outdoor lounge furniture. Designed to withstand the elements without compromising on style, each piece invites you to enjoy refined outdoor living, season after season. Every lounge chair is elegantly upholstered in Sunproof fabric, crafted from 100% Olefin, a high-performance material renowned for its resistance to fading — even under prolonged exposure to harsh sunlight. Its water-repellent finish ensures that rain and spills bead up and roll off, preserving the fabric's beauty with minimal maintenance. Sunproof applies excellent ultraviolet blocking agents, protecting the polymer backbone of the fabric from the damaging effects of UV radiation. This proven quality is backed by the UV Standard 801 certificate, with a Protection Factor of 80, meaning the fabric is capable of blocking more than 97% of harmful UV rays. Beneath the luxurious exterior lies Quick dry foam, selected not only for its comfort but for its exceptional practicality in outdoor settings. Engineered with densities of 28/60, 18/40, and 28/80,

the foam allows water to drain efficiently while maintaining continuous airflow. This ensures that your furniture dries quickly after rain, so it's always ready when you are. The foundation of each piece is built from premium pine wood, carefully chosen, and treated for outdoor use. Through a meticulous process of preservative treatment and steam treatment, the wood's natural resistance to moisture, rot, and wear is enhanced ensuring both structural integrity and long-lasting beauty, even in challenging climates. For those who seek the ultimate in care and preservation, our tailored lounge chair covers provide an added layer of protection. Crafted from high-quality polyester with a durable PVC coating, these covers offer exceptional resistance to both water and UV rays, shielding your furniture from the elements. Their refined, neutral tones harmonize effortlessly with any sophisticated outdoor setting. With a focus on superior craftsmanship, premium materials, and timeless elegance, our outdoor lounge furniture is not just built to endure it's crafted to bring lasting elegance and comfort to your outdoor sanctuary, year after year.





# DESIGNING THE OUTDOORS

Step into a new era of outdoor living with our latest furniture collection where bold aesthetics, sculptural expression, and luxurious comfort come together seamlessly. Inspired by the futuristic, space-age designs of the 1970s, each piece is meticulously crafted to deliver both artistic impact and functional resilience to your outdoor spaces. Experience the perfect balance of timeless design, exceptional comfort, and unmatched durability with our premium outdoor lounge furniture. Designed to withstand the elements without compromising on style, every piece invites you to enjoy refined outdoor living, season after season.

Each lounge chair is elegantly upholstered in Sunproof fabric, crafted from 100% Olefin a high-performance material renowned for its exceptional resistance to fading, even under prolonged exposure to harsh sunlight. Its water-repellent finish allows rain and spills to bead up and roll off, preserving the fabric's beauty with minimal maintenance. Sunproof incorporates advanced ultraviolet blocking agents, protecting the fabric's polymer backbone from the damaging effects of UV radiation. This proven quality is backed by the UV Standard 801 certification, with a Protection Factor of 80, meaning the fabric blocks more than 97% of harmful UV rays.



Beneath the luxurious exterior lies Quick Dry Foam, selected not only for its comfort but also for its exceptional practicality in outdoor environments. Engineered with densities of 28/60, 18/40, and 28/80, the foam allows water to drain efficiently while maintaining continuous airflow. This ensures your furniture dries quickly after rain, so it's always ready when you are.



The foundation of each piece is crafted from premium pine wood, carefully selected and treated specifically for outdoor use. Through a meticulous process of preservative treatment and steam treatment, the wood's natural resistance to moisture, rot, and wear is enhanced ensuring both structural integrity and long lasting beauty, even in challenging climates.

For those who seek the ultimate in care and preservation, our tailored lounge chair covers offer an added layer of protection. Crafted from high-quality polyester with a durable PVC coating, these covers provide exceptional resistance to both water and UV rays, shielding your furniture from the elements. With refined, neutral tones, the covers harmonize effortlessly with any sophisticated outdoor setting.

With a focus on superior craftsmanship, premium materials, and timeless elegance, our outdoor lounge furniture is not just built to endure it's designed to bring lasting elegance and comfort to your outdoor sanctuary, year after year.

This collection is an invitation to transform your outdoor space into a haven of design and comfort. Whether you're seeking a serene retreat or a sophisticated entertaining area, each piece blends artistic vision with enduring quality. Experience outdoor living reimagined.

Designed by Kristian Sofus Hansen & Tommy Hyldahl.



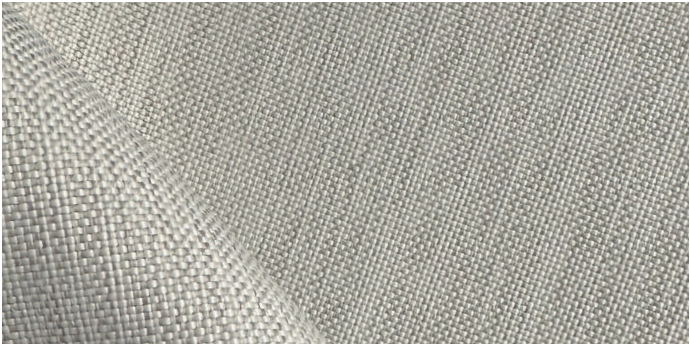
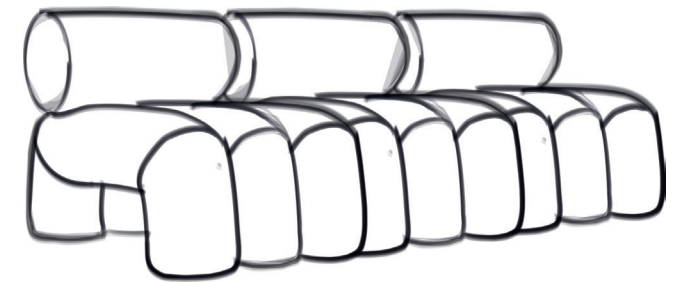




**FOKU LOUNGE CHAIR** Inspired by the tranquil artistry of Japanese Zen gardens, the Foku Lounge Chair brings organic harmony to the collection. Its fluted seat echoes the raked sand patterns of Zen gardens, balancing geometric precision with natural inspiration. With its plush foam layers and voluminous presence, the Foku Chair is as comfortable as it is visually compelling.



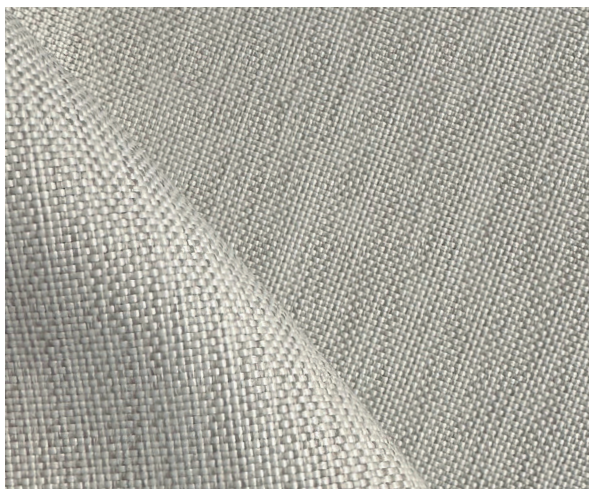
Modular in function, multiple Foku Chairs can be seamlessly joined to create a versatile sofa lounge, allowing for adaptable seating arrangements that suit any occasion.







**BIG FOOT STOOL** The Big Foot Stool is more than just a seat it's a bold expression of style and creativity, completing our outdoor collection with a striking presence. Inspired by the iconic 1970s upholstery movement, its thick cylindrical legs and geometric form exude confidence and charm. Whether used as an extra seat that moves effortlessly wherever needed or as a sculptural centrepiece that commands attention, this versatile piece transforms any outdoor space into a sanctuary of comfort and design. Elevate your surroundings with a statement that blends function, artistry, and timeless appeal.





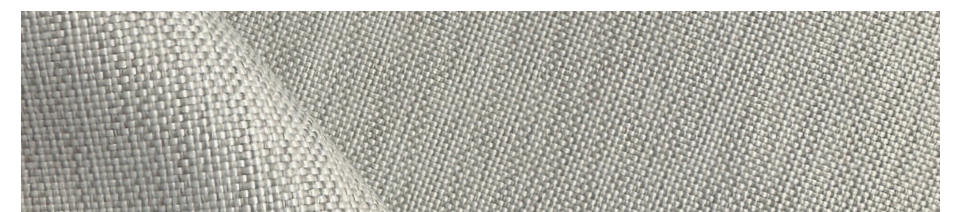


# TOE LOUNGE CHAIR FLAT

A bold homage to 70s space age design, the Toe Lounge Chair Flat invites you to relax in a sculptural embrace where comfort meets creativity. With its smooth, flowing form, it captures the era's daring vision of the future a future where furniture feels as free and expressive as the people who live with it. Designed to cocoon the body in luxurious softness, it offers effortless movement and casual comfort, perfect for both conversation and contemplation.



Crafted for the outdoors, with innovative materials that defy the elements, the Toe Lounge Chair Flat stands as a timeless fusion of form and function where futuristic aesthetics and modern performance unite under the open sky.





**TOE LOUNGE CHAIR** A tribute to the fearless imagination of the 1970s, the Toe Lounge Chair is a dream sculpted into form a vision of tomorrow resting gently in today. Its smooth, curving back and seat panels flow like liquid, cradling the body in a soft embrace a cocoon where comfort and creativity intertwine. Inspired by the boundless optimism of the space age, it offers a welcoming place to unwind, whether sharing conversation or savoring a quiet moment alone. Designed for life outdoors, it stands strong against sun, rain, and the passage of time preserving its beauty and comfort season after season.





# LOUNGE CHAIR OUTDOOR COVER

Designed for durability and style, this Outdoor Furniture Cover combines robust protection with a warm, earthy aesthetic that complements any garden or terrace. Crafted from high-quality polyester with a PVC coating on the outside, this cover is built to resist both water and UV rays, ensuring long-lasting protection against sunlight, rain, and other outdoor elements. The sand coloured fabric brings a soft, natural tone to outdoor settings, blending effortlessly with various environments. Featuring a flexible elastic band at the bottom, the cover fits our lounge chair collection, making it easy to secure and adjust to each style. Ideal for any outdoor furniture, we recommend using this cover whenever furniture is not in use to help extend its lifespan, preserving its look and quality for years to come. Designed by Kristian Sofus Hansen & Tommy Hyldahl.





## PLANT POTS - THE ART OF TIMELESS SIMPLICITY

Plants have the power to breathe life into our spaces, and the right pot transforms them into true works of art. Our collection Sunao, Arket, and Urchin embodies refined design and purposeful craftsmanship, striking the perfect balance between beauty and functionality. Created by visionary designers Kristian Sofus Hansen & Tommy Hyldahl, our plant pots embrace the philosophy that true beauty is timeless. Each piece is a harmonious fusion of thoughtful design and enduring materials, ensuring that your plants are nurtured in style for years to come. Whether you're drawn to minimalist elegance, architectural precision, or bold artistic expression, these collections offer a refined and lasting presence in any space.

## A JOURNEY OF DEDICATION, SKILL, AND ARTISTRY

Every pot begins as raw earth, shaped by human hands into lasting form. Crafted from durable fiber concrete, all our plant pots are handmade and handpainted, each one shaped with care, each surface touched by the rhythm of skilled hands. From the first molding of the material to the final stroke of paint, every piece is a vibrant expression of craftsmanship a story told through form, texture, and color. These are not just plant pots; they are vessels of artistry and devotion, cradling the spirit of their maker, whispering stories through the hands that shaped them.







## SUNAO - THE ESSENCE OF HONEST SIMPLICITY

Inspired by the Japanese concept of “sunao,” a quiet devotion to honesty and purity, this collection of plant pots embodies a harmony between form and function. Its smooth, generous curves invite light to dance across a hand-glazed matte surface, offered in the soft, pale warmth of Birch or the quiet depth of Black. Born of durable fiber concrete, the Sunao pot is at home both indoors and out, weathering seasons with grace. A gentle drainage hole, paired with a perfectly fitted saucer, nurtures the quiet rhythm of growth honoring both the plant and the space it inhabits.



With its graceful Hexa size, the Sunao Plant Pot is a quiet celebration of nature’s gentle rhythms offering two openings, each thoughtfully shaped to honor the needs of life at every scale. The generous 34.5 cm opening welcomes trees and expansive botanicals, inviting them to stretch skyward, while the more delicate 23 cm option cradles plants and trees with finer, more tender root systems. The Medio size embraces medium sized plants and sculptural foliage, bringing balance and presence to any space, like a quiet pause in a lush landscape. Whether nurturing the first delicate stirrings of new growth or giving sanctuary to soaring canopies, the Sunao Plant Pot reflects nature’s endless conversation between earth and sky a seamless fusion of organic beauty and intentional design, and a tribute to the poetry written in leaves, roots, and light.





# THE SUNAO PLANT POT FAT

Sunao, the Japanese word for being honest, is all about the simplicity and timeless beauty of classic vase design. Building on the essence of the original Sunao collection, the Sunao Plant Pot Fat series introduces a distinctive shape that retains the recognizable Sunao silhouette but with a wider, lower profile. Sunao Plant Pots, are made of durable fiber concrete, making them suitable for both indoor and outdoor spaces. These planters are thoughtfully designed with a small drainage hole at the base and a matching saucer, ensuring optimal water flow and air circulation for plants.



Rooted in nature and shaped by hand, the Sunao Plant Pots bring a sense of calm and quiet beauty to gardens, patios, or spacious interiors. In soft Birch and deep Black finishes, each piece is formed from fiber concrete, hand-glazed to create a velvety matte surface that gently reflects the light. Offered in two distinct sizes Hexa and Big the Sunao Fat collection balances function with grace, its sculptural curves lending an understated elegance to any space. Designed by Kristian Sofus Hansen & Tommy Hyldahl, these vessels invite earth and air to meet in perfect harmony.







# THE SUNAO PLANT POT

Inspired by the Japanese concept of “sunao,” a quiet devotion to honesty and purity, this collection of plant pots embodies a harmony between form and function. Its smooth, generous curves invite light to dance across a hand-glazed matte surface, offered in the soft, pale warmth of Birch or the quiet depth of Black. Born of durable fiber concrete, the Sunao pot is at home both indoors and out, weathering seasons with grace. A gentle drainage hole, paired with a perfectly fitted saucer, nurtures the quiet rhythm of growth honoring both the plant and the space it inhabits.



With its graceful Hexa size, the Sunao Plant Pot is a quiet celebration of nature’s gentle rhythms offering two openings, each thoughtfully shaped to honor the needs of life at every scale. The generous 34.5 cm opening welcomes trees and expansive botanicals, inviting them to stretch skyward, while the more delicate 23 cm option cradles plants and trees with finer, more tender root systems. The Medio size embraces medium sized plants and sculptural foliage, bringing balance and presence to any space, like a quiet pause in a lush landscape. Whether nurturing the first delicate stirrings of new growth or giving sanctuary to soaring canopies, the Sunao Plant Pot reflects nature’s endless conversation between earth and sky a seamless fusion of organic beauty and intentional design, and a tribute to the poetry written in leaves, roots, and light.





# THE SUNAO PLANT POT FAT

Sunao, the Japanese word for being honest, is all about the simplicity and timeless beauty of classic vase design. Building on the essence of the original Sunao collection, the Sunao Plant Pot Fat series introduces a distinctive shape that retains the recognizable Sunao silhouette but with a wider, lower profile. Sunao Plant Pots, are made of durable fiber concrete, making them suitable for both indoor and outdoor spaces. These planters are thoughtfully designed with a small drainage hole at the base and a matching saucer, ensuring optimal water flow and air circulation for plants.



Rooted in nature and shaped by hand, the Sunao Plant Pots bring a sense of calm and quiet beauty to gardens, patios, or spacious interiors. In soft Birch and deep Black finishes, each piece is formed from fiber concrete, hand-glazed to create a velvety matte surface that gently reflects the light. Offered in two distinct sizes Hexa and Big the Sunao Fat collection balances function with grace, its sculptural curves lending an understated elegance to any space. Designed by Kristian Sofus Hansen & Tommy Hyldahl, these vessels invite earth and air to meet in perfect harmony.







**SUNAO BEEHIVE** A symphony of texture, this beehive-inspired surface hums with organic beauty a tactile invitation to explore nature's artistry through your fingertips. Formed from delicate casts of shellfish gathered along windswept shores, this texture holds the memory of the tide, the whisper of the ocean, and the intricate language of the earth itself. Each ridge and curve pays tribute to the quiet wonder of nature's design a timeless vessel shaped by land, sea, and imagination.



In its elegant Hexa size, the Sunao Plant Pot offers two distinct openings a generous 34.5 cm diameter, perfect for welcoming trees and large botanicals, and a smaller, more delicate 23 cm option, thoughtfully designed for plants and trees with gentler, more compact root systems. Whether supporting towering canopies or tender new growth, the Sunao Plant Pot embraces life in all its forms, blending organic beauty with intentional design a quiet tribute to nature's ever-unfolding poetry.



These plant pots are thoughtfully designed with a small drainage hole at the base and a matching saucer, ensuring optimal water flow and air circulation for plants.



# ARKET - WHERE ARCHITECTURE MEETS NATURE

The Arket Plant Pot is a sculptural masterpiece that seamlessly blends architectural precision with natural elegance. Its five bold vertical lines dance with light and shadow, creating a captivating interplay that transforms any space. With its striking yet harmonious design, it adds a sense of sophistication and beauty, effortlessly elevating any environment.



This series comes in four thoughtfully crafted sizes, each designed to embrace the beauty of nature in all its forms. The Big plant pot offers a home for towering trees and generous, leafy companions, giving them the space to stretch and thrive. Medio welcomes medium-sized plants and bold statement greens, bringing balance and life to any corner. Mini holds the quiet charm of succulents, compact plants, and delicate floral accents — a celebration of small wonders. And Petit, the tiniest of the family, is perfect for tender herbs and the most delicate sprouts, honoring the beauty found in nature's smallest details.



These plant pots are thoughtfully designed with a small drainage hole at the base and a matching saucer, ensuring optimal water flow and air circulation for plants.







# URCHIN - A BOLD REINVENTION OF TRADITION

Inspired by the quiet elegance of the sea urchin, Urchin is more than a planter it is a reflection of nature's gentle wisdom. Its oval vessel floats above three bold, sculptural legs, like a creature poised between land and sea. These legs, both grounding and graceful, cradle the water, offering it back to the earth in measured whispers, while the open space beneath allows roots to breathe and stretch freely. A meeting of beauty and purpose, Urchin honors the delicate balance between strength and fragility a celebration of life unfolding, quietly and endlessly, in the embrace of earth, water, and air.



This series comes in four thoughtfully crafted sizes, each designed to embrace the beauty of nature in all its forms. The Big plant pot offers a home for towering trees and generous, leafy companions, giving them the space to stretch and thrive. Medio welcomes medium sized plants and bold statement greens, bringing balance and life to any corner. Mini holds the quiet charm of succulents, compact plants, and delicate floral accents a celebration of small wonders. And Petit, the tiniest of the family, is perfect for tender herbs and the most delicate sprouts, honoring the beauty found in nature's smallest details.



These plant pots are thoughtfully designed with a small drainage hole at the base and a matching saucer, ensuring optimal water flow and air circulation for plants.



# URCHIN BEEHIVE

A symphony of texture, this beehive inspired surface hums with organic beauty a tactile invitation to explore nature's artistry through your fingertips. Formed from delicate casts of shellfish gathered along windswept shores, this texture holds the memory of the tide, the whisper of the ocean, and the intricate language of the earth itself. Each ridge and curve pays tribute to the quiet wonder of nature's design a timeless vessel shaped by land, sea, and imagination.



This series comes in four thoughtfully crafted sizes, each designed to embrace the beauty of nature in all its forms. The Big plant pot offers a home for towering trees and generous, leafy companions, giving them the space to stretch and thrive. Medio welcomes medium-sized plants and bold statement greens, bringing balance and life to any corner. Mini holds the quiet charm of succulents, compact plants, and delicate floral accents a celebration of small wonders. And Petit, the tiniest of the family, is perfect for tender herbs and the most delicate sprouts, honoring the beauty found in nature's smallest details.



These plant pots are thoughtfully designed with a small drainage hole at the base and a matching saucer, ensuring optimal water flow and air circulation for plants.





OUTDOOR FURNITURE



**TOE CHAIR**  
WARM ASH  
SUNPROOF  
L70 / W80 / H72 CM  
NO 251014  
1 PCS



**TOE CHAIR FLAT**  
WARM ASH  
SUNPROOF  
L75 / W92 / H75 CM  
NO 251015  
1 PCS



**FOKU CHAIR**  
WARM ASH  
SUNPROOF  
L60 / W92 / H70 CM  
NO 251016  
1 PCS



**BIG FOOT STOOL**  
WARM ASH  
SUNPROOF  
L38 / W38 / H43 CM  
NO 251017  
1 PCS



**LOUNGE CHAIR OUTDOOR  
COVER - SAND**  
SUNPROOF  
L75 / W95 / H115 CM  
NO 251081  
1 PCS

PLANT POTS



**URCHIN PLANT POT,  
BIG - BEEHIVE**  
FIBER CONCRETE  
L56/ W56 / H40 CM  
NO 251063  
1 PCS



**URCHIN PLANT POT,  
MEDIO - BEEHIVE**  
FIBER CONCRETE  
L46,5 / W46,5 / H32 CM  
NO 251064  
1 PCS



**URCHIN PLANT POT,  
MINI - BEEHIVE**  
FIBER CONCRETE  
L35 / W35 / H24,5 CM  
NO 251065  
2 PCS



**URCHIN PLANT POT,  
PETIT - BEEHIVE**  
FIBER CONCRETE  
L17 / W17 / H12,5 CM  
NO 251066  
4 PCS



**URCHIN PLANT POT,  
BIG - COFFEE**  
FIBER CONCRETE  
L56/ W56 / H40 CM  
NO 231001  
1 PCS



**URCHIN PLANT POT,  
MEDIO - COFFEE**  
FIBER CONCRETE  
L46,5 / W46,5 / H32 CM  
NO 231002  
1 PCS



**URCHIN PLANT POT,  
MINI - COFFEE**  
FIBER CONCRETE  
L35 / W35 / H24,5 CM  
NO 231003  
2 PCS



**URCHIN PLANT POT,  
PETIT - COFFEE**  
FIBER CONCRETE  
L17 / W17 / H12,5 CM  
NO 231004  
4 PCS



PLANT POTS



**SUNAO PLANT POT  
MEDIO - BIRCH**  
FIBER CONCRETE  
L32,5 / W32,5 / H34 CM  
NO 252011  
1 PCS



**SUNAO PLANT POT  
HEXA - BIRCH**  
FIBER CONCRETE  
L53 / W53 / H53 CM  
NO 243052  
1 PCS



**SUNAO VASE HEXA**  
BIRCH  
FIBER CONCRETE  
L53 / W53 / H55 CM  
NO 243040  
1 PCS



**SUNAO PLANT POT FAT  
HEXA - BIRCH**  
FIBER CONCRETE  
L58 / W58 / H44 CM  
NO 251088  
1 PCS



**SUNAO PLANT POT FAT  
BIG - BIRCH**  
FIBER CONCRETE  
L48 / W48 / H38 CM  
NO 252015  
1 PCS



**SUNAO PLANT POT  
MEDIO - BLACK**  
FIBER CONCRETE  
L32,5 / W32,5 / H34 CM  
NO 252012  
1 PCS



**SUNAO PLANT POT  
HEXA - BLACK**  
FIBER CONCRETE  
L53 / W53 / H53 CM  
NO 243053  
1 PCS



**SUNAO VASE HEXA**  
BLACK  
FIBER CONCRETE  
L53 / W53 / H55 CM  
NO 243044  
1 PCS



**SUNAO PLANT POT FAT  
HEXA - BLACK**  
FIBER CONCRETE  
L58 / W58 / H44 CM  
NO 251091  
1 PCS



**SUNAO PLANT POT FAT  
BIG - BLACK**  
FIBER CONCRETE  
L48 / W48 / H38 CM  
NO 252016  
1 PCS



**SUNAO PLANT POT  
HEXA - BEEHIVE**  
FIBER CONCRETE  
L53 / W53 / H53 CM  
NO 243054  
1 PCS



**SUNAO VASE HEXA**  
BEEHIVE  
FIBER CONCRETE  
L53 / W53 / H55 CM  
NO 243048  
1 PCS



**ARKET PLANT POT,  
BIG - DARK GREY**  
FIBER CONCRETE  
L64/ W64 / H40 CM  
NO 231005  
1 PCS



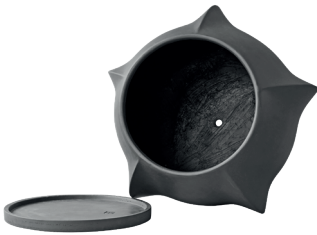
**ARKET PLANT POT  
MEDIO - DARK GREY**  
FIBER CONCRETE  
L52,5 / W52,5 / H33 CM  
NO 231006  
1 PCS



**ARKET PLANT POT,  
MINI - DARK GREY**  
FIBER CONCRETE  
L39,5 / W39,5 / H25 CM  
NO 231007  
2 PCS



**ARKET PLANT POT,  
PETIT - DARK GREY**  
FIBER CONCRETE  
L19,8 / W19,8 / H12,8 CM  
NO 231008  
4 PCS







## REDEFINED DETAILS AND MONUMENTAL SHAPES ROOTED IN THE SCANDINAVIAN SOIL AND NOURISHED BY JAPANESE MINIMALIST AESTHETICS.

**101 COPENHAGEN** is a Danish design brand founded in 2017. With a vision to honor exquisite quality and craftsmanship, the collection encompasses furniture, lighting and accessories in a timeless, yet modern design. With a true passion for materials and refined textures, organic shapes and colours, 101 Copenhagen presents the epitome of classics and must-have novelties for Scandinavian and international interior connoisseurs alike. The design of 101 Copenhagen is firmly rooted in the Scandinavian soil and nourished by Japanese minimalist aesthetics. Sharing an emphasis on quality materials, techniques and traditions, the meeting between the North and the East is notable in the holistic collections of 101 Copenhagen. The design approach is dynamic and characterised by freedom

of expression - creating unique and timeless pieces without compromising on playfulness and individuality. An attention to detail and a shared sense of aesthetics is what drives the two main designers of 101 Copenhagen, Tommy Hyldahl and Kristian Sofus Hansen. Merging their backgrounds and experiences from the fashion industry, the Royal Danish Academy of Fine Arts and travels in Japan respectively, a narrative of minimalist, sculptural and conceptual design is evident throughout the collections. Translating and transforming the simplistic inspiration from Japan in a Scandinavian context is all about honouring quality, heritage and materiality while never seizing to compromise on form and function. 101 Copenhagen is a curated selection of tactile, bold objects standing out in a crowd and gathers as a whole.

## SCAN THE QR CODE TO INSTANTLY ACCESS OUR PROFESSIONAL WEBSITE, FEATURING ALL INFORMATION ABOUT 101 COPENHAGEN.

**EXPLORE** our B2B portal, Press kit, Image bank, Online catalogues, and Case studies. Delve into material & maintenance guides, sustainability initiatives, and upcoming events. Access 3D files, Assembly instructions, and Product sheets. Find contacts & agents tailored to your country.

Global sales inquiries:

[SALES@101CPH.COM](mailto:SALES@101CPH.COM)

Support inquiries:

[SUPPORT@101CPH.COM](mailto:SUPPORT@101CPH.COM)

Press inquiries:

[PRESS@101CPH.COM](mailto:PRESS@101CPH.COM)

