

GET INSPIRED



CONTRACT

ANDERSEN

QUALITY MEETS DESIGN

ANDERSEN

QUALITY MEETS DESIGN

At Andersen Furniture, we believe that furniture and interiors are about more than just functionality.

We are a design company that works with architects and designers to challenge form, function and material, creating furniture that lasts for generations. Our approach to design is based on curiosity, innovation and talent for everyone's benefit.

With respect and care for the environment, we combine our passion for aesthetics with craftsmanship to create furniture and interiors for professional spaces and unique homes.

Andersen Furniture – "Quality Meets Design"



HT1 high table, 273x75 cm with table top in black linoleum, base in oak, whitepig. matt lacquer, design: BYKATO.
HC1 barstool, H80 cm with base in oak, whitepig. matt lacquer and seat in oak, veneer whitepig. matt lacquer,
design: Anne Qvist. Interior Rack in oak, design: Rakei Villesen



Our approach to the environment

At Andersen Furniture, we are aware of the impact of our actions and we take the environment seriously. We strive to ensure sustainability in every process of our production. We strive for a greener world while ensuring the best possible conditions for both employees and the environment. Our focus is to find a healthy balance between a good working environment, social responsibility and environmentally friendly production. Our products are designed to last for generations. The design and quality of our products ensure they have a long life.

*Learn more in our
environmental profile*





Create an open atmosphere

Round high tables infuse the space with a contemporary and modern blend of aesthetics and functionality. With their circular shapes, the high tables constitute a central element in a dynamic environment that encourages people to interact, establish connections, and collaborate in an informal atmosphere. The round contours and the height of the tables, eliminates conventional barriers, creating an open atmosphere for communication and networking. Leveraging the room's dimensions, the round high tables offer space to accommodate many guests around the tables.

Space high table round, Ø90 cm with table top in black linoleum, base in oak, whitepig. matt lacquer, design: Andersen Design Team. HCH bar stool, H80 cm in oak, black lacquer and black veneer seat, design: Anne Qvist





Andersen high table, 240x75 cm in oak, whitepig. matt lacquer, design: Andersen Design Team. HCl barstool, H80 cm with base in oak whitepig. matt lacquer and seat in oak veneer, whitepig. matt lacquer, design: Anne Qvist.



Delta table, Ø110 cm with table top in linoleum, colour Burgundy, base in black matt powder coated metal, design: Andersen Design Team. AC2 chair, base in oak, clear matt lacquer, seat in veneer, design: byKATO.



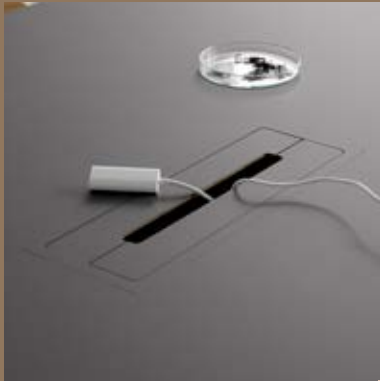
T1 meeting table, 800x160 cm with table top in black Fenix laminate, base in oak, black lacquer, design: byKATO. Tono Conference chair with back in dark grey felt and inner side in light grey felt, upholstered seat cushion in fabric Re-Wool 108 from Kvadrat, base in black, design: Hans-Thyge & Co.

Focus on functionality





T1 table, 180x95 cm with table top in black laminate, base in oak, black lacquer, design: byKATO. AC2 chair, in oak, smoked oil with upholstered black leather seat and back, design: byKATO



Flip cover closed



Flip cover open

It's all in the detail

Making your meeting table more technically functional by adding e.g. a cable cover needn't compromise the table's beautiful design.

Simply get a cable cover integrated into the table itself, without forfeiting the aesthetics. We consider every detail in our designs, so the cover is the same colour and material as the table top, while the inner edge is the same colour and material as the edge of the table.

Choose between two types of cover with different surfaces. You can even get a cable tray to mount under the cable cover.



Drop-In cover





Dry chair in Sandy Grey pur. with legs in chrome. design: Komplot

CASE

New York Public Library (NYPL)

Celeste Bartos Forum at the New York Public Library in Manhattan is well-known for its 9-meter-high glass saucer ceiling, and makes a beautiful setting for wedding receptions, dinners, galas, sales meetings and presentations.



FACTS:

Company: New York Public Library (Nyp)

Location: New York, USA

Design: Dry chair

Purpose: Conference/Auditorium etc.



Dry chair in Sandy Grey pur with legs in chrome, design: Komplot



Dry chair in Sandy Grey pur with legs in chrome, design: Komplot



Dry chair in Sandy Grey pur with legs in chrome, design: Komplot



Dry chair collection, design: Komplot



Dry Outdoor chairs, design: Komplot

Dry – elegant minimalism

Dry is a stylish chair with excellent seating comfort and soft-touch surface, which contributes to good room acoustics. The secret of its high comfort lies in the flexible polyurethane (pur) shell. The straight and flat looking shell surprisingly adapts to the shape of the body providing both support and comfort.

Its soft-touch surface also contributes to good room acoustics and Drys minimalistic expression can easily match any architectural surroundings. The shell in its final form is carefully hand finished by talented craftsmen.

Light and stackable, with and without armrests and with an integrated linking mechanism, Dry can be used in almost any situation where a large number of people require comfortable seating.



FSC® - Certified Company

Andersen Furniture is a part of Design Concept Denmark which is a FSC-certified company. Our first FSC-certified collection is the chair collection, Scope, which consists of six models, all of which are FSC-certified. Several products have since been added, including the HC2 bar stool. We work purposefully and ambitiously towards more FSC-certified products.



Scope chair collection, design: Hans-Thyge & Co.





Mood chair collection, design: Hans-Thyge & Co.



EU-Ecolabel

Mood is a chair collection that is certified with the EU Ecolabel, which makes the chair collection more gentle on the environment. Mood is available with armrests and with and without upholstery. The chair shell is made of 100% upcycled polypropylene plastic sourced from industry waste. A total of 18 chair models in the Mood collection are certified with the EU Ecolabel.





Grip Meeting table, 299x108 cm with table top in black Fenix laminate and base in black, design: Troels Grum-Schwensen. Mood Conference chair with upholstery Fjord 0191 from Kvadrat, design: Hans-Thyge & Co.



Grip table detail, design: Troels Grum-Schwensen.

Focus on functionality

When considering versatility, functionality, and aesthetics, tables from Andersen Furniture prove to be an excellent choice. The table's ability to adapt to various situations and requirements makes them a valuable addition to any setting.

At Andersen Furniture, we offer various options to suit your needs.



Grip Meeting table, 239x108 cm with table top in black Fenix laminate and base in Sandy Grey, design: Troels Grum-Schwensen.
Tono Conference chair with light grey felt, upholstered seat cushion in fabric, Re-Wool 108 from Kvadrat, and black frame, design: Hans-Thyge & Co.





Grip Basic table, 179x80 cm with table top in linoleum, colour: Burgundy, base in Dark Petrol, design: Troels Grun-Schwensen. Dry chair in Dark Petrol, design: Komplot



Pure stools, design: Thore Lassen Design



Grip Meeting table, 358x108 cm with table top in black Fenix laminate and base in black, design: Troels Grum-Schwensen. Dry armchair in black, design: Komplot

Grip Meeting table, 299x108 cm with table top in black Fenix laminate and base in Sandy Grey, design: Troels Grum-Schwensen. Tono Conference chair with back in dark grey felt, upholstered seat cushion in fabric Re-Wool 108 from Kvadrat, base in black, design: Hans-Thyge & Co.







Space meeting table, 360x120 cm with table top in Fenix laminate, colour Grigio Antrim, edge and base in oak, whitepig, matt lacquer, design: Andersen Design Team, TAC chair in black, design: byKATO

The good idea often arises through good cooperation

Together with architects and designers, we challenge form and materials and constantly think along new lines.

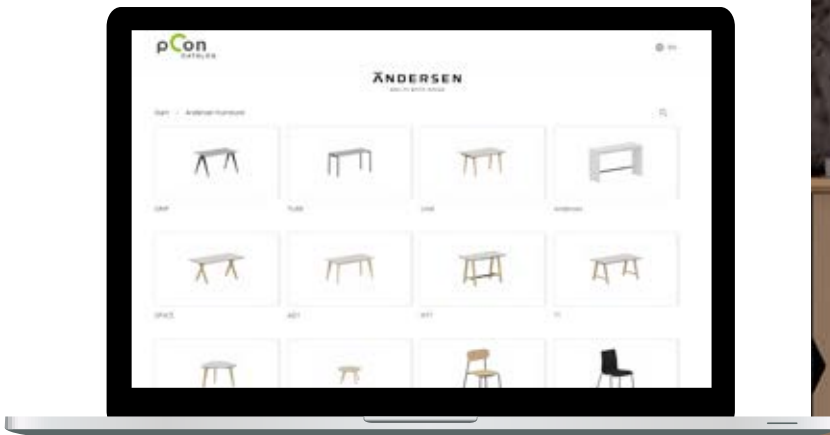


Space meeting table, 220x90 cm with table top in Fenix laminate, colour Grigio Antrim, base in oak, clear matt lacquer, design: Andersen Design Team. AC2 chair in oak, clear matt lacquer and seat in veneer, design: byKATO



Find our collection in pCon.Planner

Have you seen our collection available in pCon.Planner? You can find our selection of furniture in pCon.Planner and work with exciting and advanced functions that make it possible to bring creative ideas to life.



Explore pCon
Planner here





Space meeting table, 360x120 cm
with table top in black linoleum, base
in oak, whitepigment, matt lacquer, design:
Andersen Design Team, AC2
chair in oak, black lacquer
and black veneer seat, design: BYKATO

S1 sideboard, 200x50x68 cm in oak, soap with front in colour Multi Earth and black on the other side (reversible), design: byKATO



Details

The S-series is made of solid wood with mortise and tenon joints, turned legs with brass rings and drawer frames, also in solid wood. The unit has a beautiful finish, and it is an exclusive and extremely elegant piece which is also practical, as it offers plenty of storage space.

Finger joints

The S-series in solid oak and walnut has visible joints and exquisite carpentry details that are clearly visible on the furniture.

Soft-Close

The S-series furniture is a range of attractive and practical storage solutions, all with soft-close hinges on both drawers and doors.



S5 storage, 132x83 cm in oak, soap with fronts in laminate, colour Kashmir, design: byKATO



S3 storage 132x130 cm in oak, soap with fronts in laminate, colour Multi sand, design: BYKATO



\$5 storage, 132x83 cm in oak, natural oil with fronts in laminate, colour Kashmir, design: byKATO



High quality – long life

Quality is always an important element in our products. High quality is inextricably linked to a long service life, thus reducing waste. As many of our products are made of wood, there are a wide range of options to extend their lifetime. Solid wood furniture can be maintained and treated so it continues to look good even after many years of use.





Natural beauty for professional
spaces and distinctive homes

ADJ meeting table, 280x110 cm with table top in white laminate, base in oak, whitepigm.
matt lacquer, design: Andersen Design Team, AC2 chair in oak, whitepigm. matt lacquer
and seat in veneer, design: BYKATO, A-Wall Clock in oak, design: Annelie Kalliesøe Bergholdt,
A-Magazine Gallery, design: Louise Stig



Tono 4-legs chair with dark grey felt and upholstered seat cushion in fabric
Re-Wool 108 from Kvadrat, base in light grey, design: Hans-Thyge & Co.

Must chair, seat/back in birch with legs in chrome,
design: Søren Nielsen & Thore Lassen



Rail chair with seat/back in ash, black
lacquer and legs in chrome, design: Søren
Nielsen & Thore Lassen



Choose your favorite chair

Furniture design is about thinking beyond form and function. When you sit down in a chair from Andersen Furniture, you will experience well thought-through ergonomic design, high functionality and a characterful style that results in timeless designs.

Learn more about our
chairs



Tono 4-legs chair with dark grey felt and upholstered
seat cushion in fabric Re-Wool 108 from Kvadrat,
base in light grey, design: Hans-Thyge & Co



Dry chair in Terracotta, design: Komplot



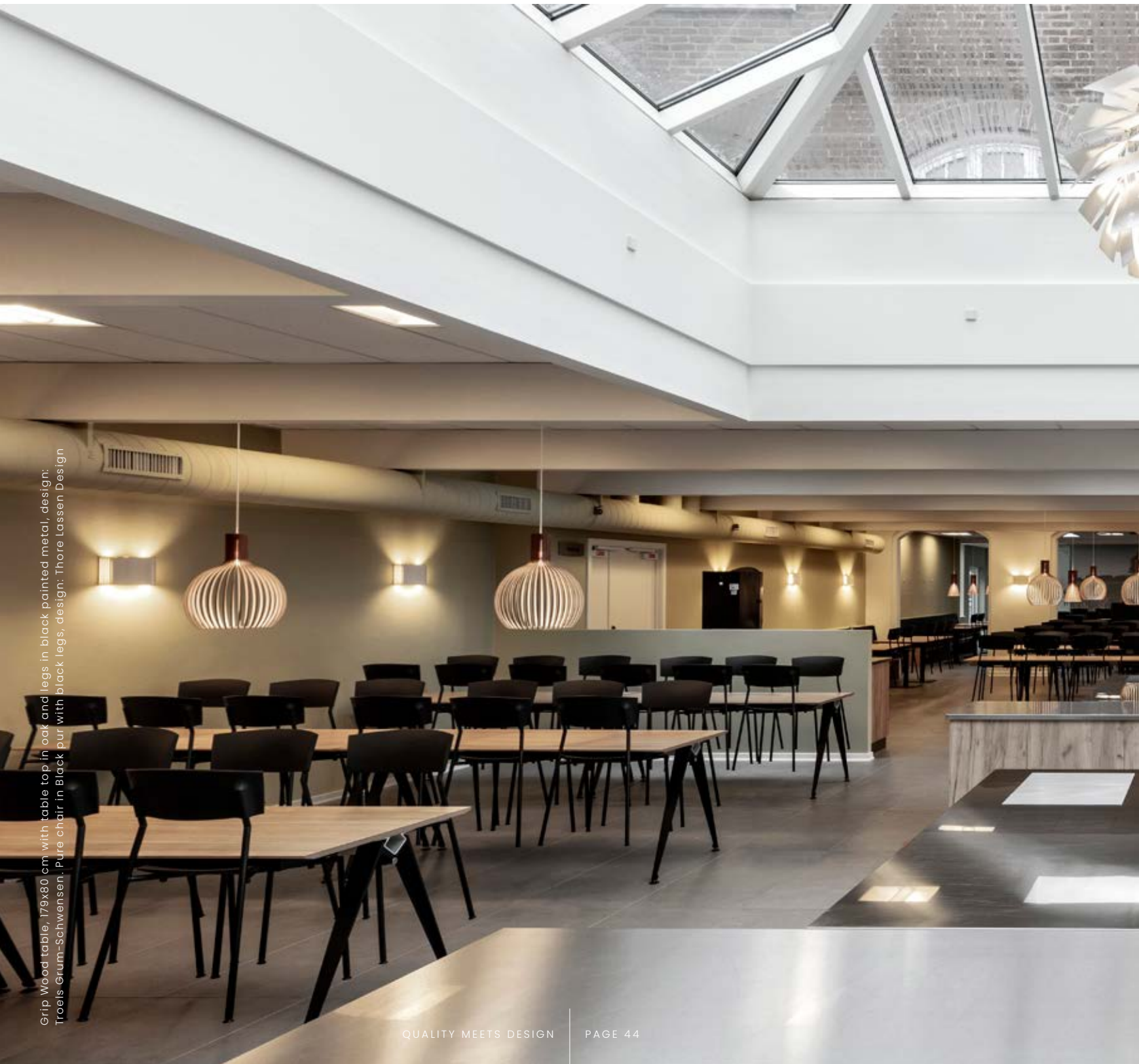
CASE

Asmildkloster Agricultural School

Asmildkloster Agricultural School was founded in 1908. The school seamlessly combines both original and modern architecture, connected by a central building that houses small student apartments.

With a view of the school's older buildings, the canteen is furnished with functional furniture, creating a harmonious link between the building's aesthetic exterior and practical interior. This creates an environment designed to bring the students together in inspiring and attractive spaces.

The interior design features bright colors and carefully selected furniture that meet the daily needs of the school's students. The canteen is equipped with Grip tables, which are both functional and flexible. Practical chair mounts are installed under the tables, facilitating cleaning and tidying in the canteen. In addition, simple and durable Pure chairs have been chosen to give the interior a modern look and enhance the acoustics in the canteen.



Grip Wood table, 179x80 cm with table top in oak and legs in black painted metal, design: Troels Grum-Schwensen. Pure chair in Black-pur with black legs, design: Thore Lassen Design



FACTS:

Company: Asmildkloster Agricultural School

Location: Denmark

Design: Pure chair & Grip Wood table

Purpose: Canteen



Space high table, 220x70 cm with table top in laminate, colour iron with base in oak, whitepig. matt lacquer, design: Andersen Design Team, HCl barstool, H80 cm in oak, whitepig. matt lacquer and seat in black PU leather, design: Anne Qvist





Chair mounts

Increased flexibility, optimum use of space and a more organised layout are just some of the benefits of chair mounts. And cleaning is of course optimised when you don't have to move chairs around to mop or vacuum.



HTI high table with hanging HCl bar stools.

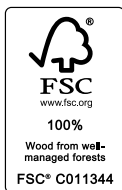


HT1 high table, 216x75 cm with table top in black laminate and base in oak, whitepig. matt lacquer, design: BYKATO. HCl barstool, H80 cm in oak whitepig. matt lacquer, design: Anne Qvist



Space high table, 275x70 cm with table top with laminate, colour Terril, base in oak, whitepig. matt lacquer, design: Andersen Design Team. HCI barstool, H80 cm in oak, whitepig. matt lacquer, design: Anne Qvist





Scope - a resource-efficient chair

Created with environmental consideration, Scope is a chair collection designed by Hans-Thyge & Co. Scope is FSC® certified and a resource-efficient chair, constructed with a thin pressed veneer, using as little wood as possible without compromising with the strength and design. Scope is characterized by a specific detail, the stethoscope. With the stethoscope, you can change the expression of the chair and create your own unique design. Scope is designed to reduce noise. The integrated felt pads underneath the seat improve the acoustics and create a more pleasant environment. The felt pads also shield and protect the seat when the chair is stacked.

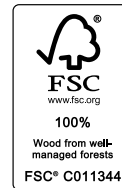


Link table, 2 x 200x120 cm with table top in linoleum, colour Ash, design: Hans-Thyge & Co.
Scope armchair with back in oak, seat with upholstery Vidar 222 from Kvadrat, black frame and brass stethoscope, design: Hans-Thyge & Co.



Stay in a row – coupling brackets

At Andersen Furniture, we like to make life easy for you when you're organising conferences and larger events. The majority of our chairs have coupling brackets so you easily can connect the chairs together. The coupling brackets are designed as a natural part of the overall look, but with a valuable feature that keeps your chairs neatly in a row.



Scope chair with upholstered seat in fabric Vidar 222 from Kvadrat, back in oak, smoked lacquer, stethoscope and frame in black, design: Hans-Thyge & Co.

Design and quality are the heart of the brand

Our goal is to continue what we're doing, only better, and with the same commitment and honesty. We strive to make high-quality furniture – and we believe that this happens the moment form, colour, aesthetics and functionality become inseparable and come together as one piece – of Andersen Furniture.

Our designs are made in collaboration with visionary architects and designers, who understand how to balance comfort with practical features, aesthetics with the doable, the sensible with the exciting.

For us, good customer service is all about empathy – understanding the users, the surroundings, the interior design. Understanding the world our customers live in and the requirements for furniture in the contexts we live in. So while we deliver quality in a timeless design, we have no plans to stand still.





Space round table, Ø140 cm with table top in linoleum, colour Mauve, base in oak, whitepigment, matt lacquer, design: Andersen Design Team, Scope chair with upholstery Hallingdal 0227 from Kvadrat, frame in black, stethoscope in zinc, design: Hans-Thyge & Co.



Scope armchair with upholstery Fiora 351 from Kvadrat, frame in black, stethoscope in zinc, design: Hans-Thyge & Co.





Tube Fold table, 160x80 cm with table top in black Femix laminate, base in black, design: Randers+Radius. Scope chair in oak, whitetinted lacquer, frame and stethoscope in black, design: Hans-Thyge & Co.





Link Organic table, Ø130 cm with table top in linoleum, colour Nero, base in oak, black lacquer, design Hans-Thyge & Co. AC2 chair in oak, smoked oil with upholstered seat in cognac leather, design by KATO. A Light Shelf in oak, design Louise Sng



Dark richness

The beautiful dark color gives the room a warm, modern and contrasting look. Through the smoked surface, you can feel and see the natural veins in the wood, which gives a beautiful play on the furniture.



Delta table, 80x80 cm with table top in Fenix laminate, colour Castoro
Ottawa and base in black matt powder coated metal. AC2 chair in oak,
smoked oil with upholstered seat in black leather, design: byKATO. A2 sofa
with upholstery in fabric Remix 3 0435 from Kvadrat, design: Louise Sjö



Link Organic table, 120x120 cm with table top in black linoleum and base in oak, black lacquer, design: Hans-Thyge & Co. AC2 chair in oak, smoked oil, design: byKATO



Link table, 200x120 cm with table top in black linoleum and base in oak, black lacquer, design: Hans-Thyge & Co. AC2 chair in oak, smøkkedøil with upholstered black leather seat, design: byKATO

CASE

Centrepiece Melbourne Park

Melbourne Park is a sports venue in Melbourne Australia and has been home of the Australian Grand Slam tennis tournament for years. Right in the middle of Melbourne Park, you will find Centrepiece – a brand new conference and event centre designed by NH Architecture.

Centrepiece spans over 4.500 m2 across three levels and has a unique architectural design. It also offers outdoor spaces for events and is surrounded by beautiful parklands and green spaces.

NH ARCHITECTS, MELBOURNE SAYS:

"The interiors carefully balance complex functional requirements with a desire to give each space a unique identity and provide moments of drama and delight."



FACTS:

Company: Centrepiece Melbourne Park

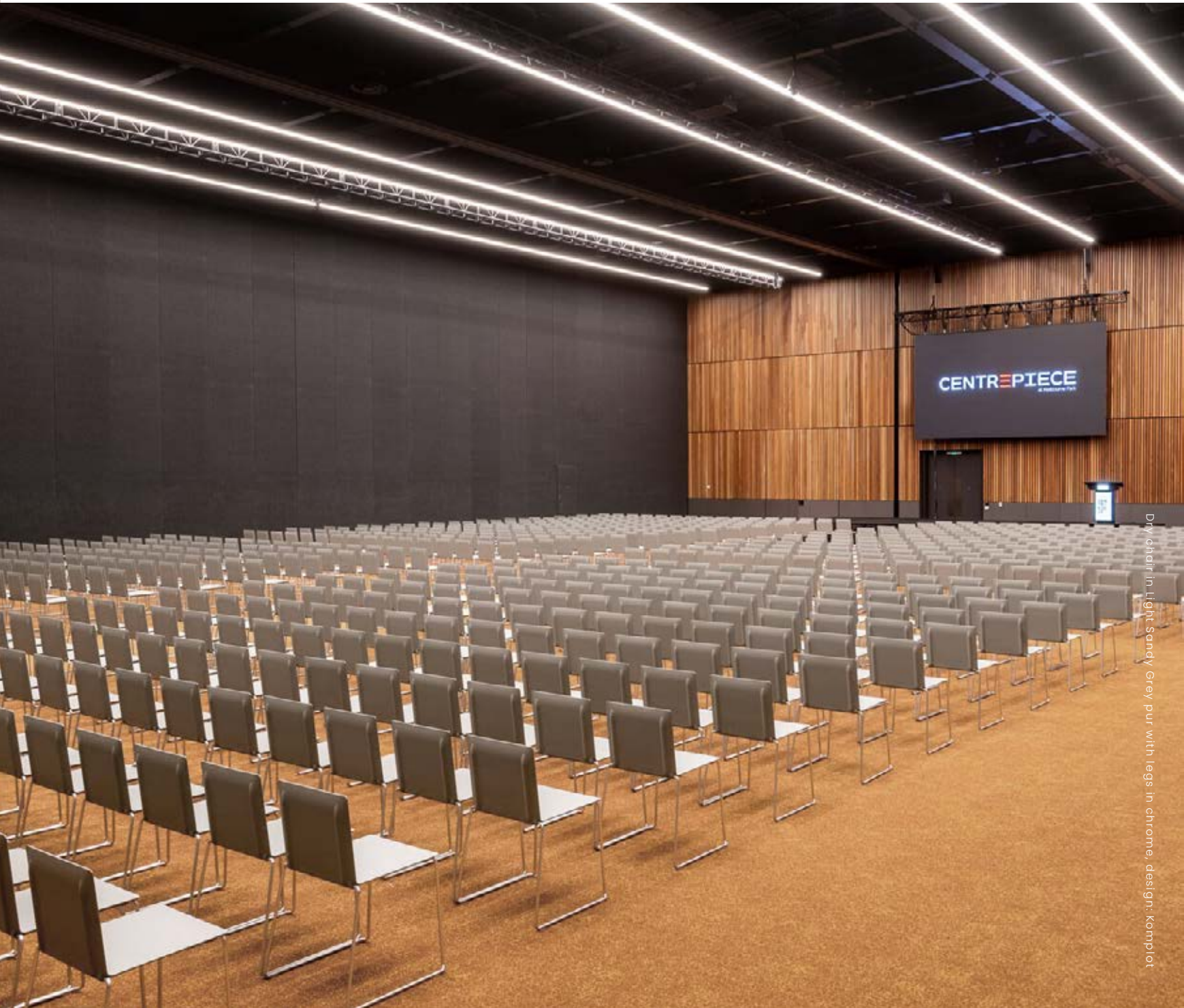
Location: Melbourne, Australia

Design: Dry chair

Purpose: Conference Room



Explore all our cases here



Dry chair in Light Sandy Grey pur with legs in chrome, design: Komplot



Grip Basic table, 179x80 cm with table top in Fenix laminate, colour Grigio Londra and base in black, design: Troels Grum-Schwensen. Rail chair with seat/back in ash, black lacquer and legs in chrome, design: Arts Design



Rail barstool with seat/back in birch and legs in chrome, design: Ars design



Rail chair

The Rail chair is made of from a combination of FSC® certified wood and a sturdy frame and stands out for its light and airy expression. Ergonomics, timeless design and durability combined with the uncompromising functionality characterize the design of the chair.

No superfluous details, only a marked and dynamic design featuring a complete range of versatile types of furniture and innovative solutions that match almost any need for furniture - in the private as well as the public sectors.



Rail chair with seat/back in birch and chrome legs, seat/back in ash, black lacquer and upholstered seat in fabric. Re-Wobi 358 from Kvadrat, design: Ars Design



Space meeting table, 480x140 cm with table top in black Fenix laminate and base in oak, black lacquer, design: Andersen Design Team. Mood Conference chair with upholstery Re-wool 0198 from Kvadrat, design: Hans-Thyge & Co. Sl sideboard, 200x50x68 cm in oak, soap with front in colour Multi Earth and black on the other side (reversible), design: byKATO





Elevating spaces beyond
functionality



Link Organic table, Ø120 cm with table top in linoleum, colour iron, design: Hans-Thyge & Co. Mood Classic chair with upholstery Hallingdal 65 0224 from Kvadrat, base in oak, white tinted lacquer, design Hans-Thyge & Co.





T8 table, 150x127 cm with table top in laminate, colour Cacao Orinico, base in oak, matt lacquer, design: Andrea Weitz & Jens Wendland. Scope chair with upholstery Re-Wool 628 from Kvadrat, frame and stethoscope in black, design: Hans-Thyge & Co.



A1 sofa with upholstery Fjord 961 from Kvadrat;
base in oak, black lacquer, design: byKATO



18 table, 150x127 cm with table top in laminate, colour Alpino with oak edge, base in oak, clear matt lacquer, design: Andraea Weitz & Jens Wendlandt, TAC chair with seat in matt white and legs in oak, matt lacquer, design: byKATO

The choice is yours

Choose your favorite wood for your favorite expression.
The S1 sideboard has visible studs and other joinery details,
which have been allowed to stand out clearly.
The body and drawers are available in different types of wood.



S1 sideboard, 200x50x68 cm in oak, soap with front in colour Multi Earth and black on the other side (reversible), design: byKATO, LCI
lounge chair with upholstered seat in black leather Sevilla 001 and base in oak, black lacquer, design: Andersen Design Team





LCI lounge chair with upholstered seat in black leather Sevilla 001 and base in oak, black lacquer, design: Andersen Design Team, A-Magazine Gallery, design: Louise Stig



HT1 high table, 480x120 cm with table top in black linoleum and base in solid wood, black lacquer, design: byKATO. HCl barstool, H80cm with base in oak, black lacquer and upholstered seat in black PU leather, design: Anne Qvist. A-Wall Clock black, design: Amalie Kallisee Bergholdt



The power of trees

Trees absorb CO₂, which is good for our ecosystem and good in the fight against global warming. Among other things, planting trees helps to clean the air, improve the climate, and support animal and insect life. Trees absorb CO₂, especially when they grow. In fact, wood can store carbon for hundreds of years when used for buildings or furniture.

A2 sofa with upholstery Floyd 0103 from Kvadrat, design: Louise Sjig, C1 coffee table, 70x120xH45 cm in oak, black lacquer, design: by KATO, A-Shelf Medium + Large in ash, smoked oil, design: Andersen Design Team





Andersen high table, 240x80 cm with table top and base in oak, black lacquer, design: Andersen Design Team. HCL bar stool, 88 cm in oak, black lacquer and upholstered seat in black PU leather, design: Anne Qvist



Tube Fold table, 140x60 cm with table top in Fenix laminate, colour Grigio Londra and base in black, design: Randers+Rørdius. Pure chairs with seat and base in Dusty Olive and Terracotta, design: Thore Lassen Design



HT1 high table, 216x75 cm with table top in black linoleum and base in oak, whitepig. matt lacquer, design: byKATO. HCl barstool, H80 cm with base in oak, whitepig. matt lacquer and upholstered seat in black PU leather, design: Anne Qvist





ADI meeting table, 220x90 cm with table top in linoleum, colour Burgundy and base in oak, whitepig. matt lacquer, design: Andersen Design Team. AC2 chair in oak, whitepig. matt lacquer, design: byKATO



ADJ high table, 180x80 cm with table top in white laminate and base in oak, whitepig. matt lacquer, design: Andersen Design Team, HCl barstool, H80 cm with seat and base in oak, white matt lacquer, design: Anne Qvist

ADI meeting table, 280x110 cm with table top in black laminate and base in oak, whitepig. matt lacquer, design: Andersen Design Team. AD1 bench, 200x40xH45 cm in oak, whitepig. matt lacquer, design: Andersen Design Team







Delta high table, 70x70 cm with table top in laminate, colour Terril and base in black matt powder coated metal, design: Andersen Design Team. HC2 barstool, H79 cm with seat in oak, black lacquer and legs in black, design: byKATO



Space meeting table round, Ø110 and Ø90 cm with table top in linoleum, colour Midnight Blue, base in oak, whitepig. matt lacquer, design: Andersen Design Team. AC2 chair in oak, whitepig. matt lacquer, design: byKATO





Andersen high table, 240x75 cm, in oak, whitepigment, matt lacquer, design: Andersen Design Team. HCl barstool, H80 cm in oak, whitepigment, matt lacquer, design: Anne Qvist



Scope lounge chair with upholstery Floyd 0983 and Floyd 0143 from Kvadrat, back in oak, smoked lacquer, frame in black, design: Hans-Thyge & Co.





Space table round, Ø120 cm with table top in white laminate and base in oak, whitepigm. matt lacquer, design: Andersen Design
Team: Mood 4-legs chair with upholstery Re-Wool 0408 from Kvadrat, legs in chrome, design: Hans-Thyge & Co.



Space meeting table, 480x140 cm with table top in black linoleum and base in oak, whitepig. matt lacquer, design: Andersen Design Team, AC2 chair in oak, whitepig. matt lacquer and seat in black leather, design: byKATO

Designed to last for generations





Space meeting table, 240x120 cm with table top in black linoleum and base oak, black lacquer, design: Andersen Design Team, AC2 chairs in oak, black lacquer, design: byKATO



Space high table, 160x70 cm with table top in black linoleum and a base in black painted oak, design: Andersen Design Team. HCL barstool, H80 cm in oak, black lacquer and upholstered seat in black PU leather, design: Anne Qvist

T8 table, 173x150 cm with a table top in black linoleum and a base in oak, whitepig. matt lacquer. design: Andrea Weitz & Jens Wendland. TAC chair in matt black and base in oak, black lacquer, design: byKATO







AI sofa with upholstery Elle-200 from Kvadrat, base in oak, white matt lacquer, design: byKATO. Scope Lounge chair with upholstery Fiori 451 from Kvadrat, back in oak, smoked lacquer, design: Hans-Thyge & Co. C2 coffee table, Ø50 cm in oak, whitepig. matt lacquer, design: Herman Studio. S10 signature in oak, whitepig. matt lacquer, design: Andersen Design Team

Be relaxed

As the centre of socialising and relaxation, the sofa is an important piece of furniture in interior design. It's a place to relax, have conversations and socialize with colleagues. Andersen Furniture offers sofas that focus on versatility, comfort, quality and aesthetics, making them an indispensable part of interior design.



A2 sofa with upholstery in Re-Wool 378 and Elle 200 from Kvadrat, design: Louise Siig. C1 coffee table, 90x102 cm in oak, whitepigment matt lacquer, design: byKATO. A Light Shelf in ash, smoked oil, design: Louise Siig

See all our sofas



A2 modular sofa with upholstery still F-7917
0351 from Kvadrat, design: Louise Siig. Flow rug,
140x199 cm, design: Rakei Villesen. C2 coffee
table, Ø80 cm and Ø50 cm in oak, whitepigm.
matt lacquer, design: Herman Studio.





A2 sofa with upholstery Fjord 262 from Kvadrat, design: Louise Siig, C2 coffee table, Ø80 cm and Ø50 cm in oak, black lacquered, design: Herman Studio



A2 sofa with upholstery Remix 3 866 from Kvadrat, design: Louise Stig. C1 coffee table, 140x83 cm in oak, whitepig. matt lacquer, design: byKATO



A3 sofa with upholstery Elle 220 from Kvadrat, design: Charlotte Hønecke.
C2 coffee table Ø50 cm in oak, whitepig. matt lacquer, design: Herman studio



A3 sofa with upholstery Fiord 171 from Kvadrat and legs in solid oak, design: Charlotte Høneke. C2 coffee table Ø80 cm and Ø50 cm in oak, black lacquer, design: Herman Studio





B2 bench in oak, whitepig. matt lacquer, design: Andersen Design Team. LO1 lounge in black painted oak with black Sevilla 001 leather, design: Andersen Design Team

Pure - flexible and durable

With its original design characterized by intuitive and optimum exploitation of the sculptural properties of the pur material, the Pure chair not only offers a carefully developed ergonomic design and functionality but also an exclusivity not normally seen in this segment.

The pleasantly soft and silky surfaces on the distinctive seat and the curved back, combined with the inspiring colour choices transforms the chair into something extraordinary – both in terms of comfort and visual appearance.





T1 table, 220x95 cm with table top and 4 extension leaves in Fenix laminate, colour Castora Ottawa, base in oak, whitepig. matt lacquer, black painted edge, design: byKATO. Pure chair in colour Terracotta, design: Thore Lassen Design





Tube Fold table, 180x70 cm and 140x70 cm with table top in black Fenix laminate with plywood edge and base in black, design Randers+Radius. Mood Wood chair with PP seat in Dusty Green and upholstery Re-wool 03 from Kvadrat, base in oak, whiteplign. matt lacquer, design: Hans-Thyge & Co.

Folding tables

A practical solution that combines functionality with flexibility. The tables are designed to be foldable, making them ideal for multi-purpose spaces such as conference rooms or common areas in schools. The tables can be handled by one person and are easily wheeled away with the accompanying Tube table trolley with space for 10 tables.



Tube table detail, design: Randers+Radius.



Tube Fold table, 140x80 cm with table top in black Fenix laminate with plywood edge and base in black, design Randers+Radius

Learn more about our folding tables



Masterclass

Create a meeting room with a simple and professional ambiance by integrating table fronts. The fronts of the tables serve as a visual centerpiece, providing the room with a calm and organized expression, creating the ideal setting for innovative and professional meetings.





Tube Basic table, 80x80 cm and 120x80 cm with black front panels, table top in grey HPL laminate with grey edge, base in black, design: Randers+Rørdius. Dry chair in Warm Charcoal, pur. design: Komplot



Mood Classic chair in oak with upholstery Flord
0961 from Kvadrat, design: Hans-Thyge & Co.





Mood Learn armchair in black PP plastic;
design: Hans-Thyge & Co.

Mood Tube chair with upholstery Xtreme
in grey from Camira, base in black,
design: Hans-Thyge & Co.



Are you sitting comfortably?

A chair should feel comfortable and give you support. Upholstery not only allows you to customise a chair's design and aesthetics, it also increases seating comfort by absorbing some of the body weight and reducing pressure on the body's bones and muscles. Choose your upholstery not only for its aesthetic appeal but also for its ability to keep you sitting comfortably for longer.



Mood Wood chair in black PP (polypropylene), legs in
oak, whitepig. matt lacquer, design: Hans-Thyge & Co.



Mood Classic detail

Mood Learn armchair in black PP
plastic, design: Hans-Thyge & Co.



Learn more about our
chairs



CASE

Business College Syd

Business College Syd is a Danish educational establishment which houses a wide range of educational opportunities and courses within the area of business and commerce.



FACTS:

Company: Business College Syd

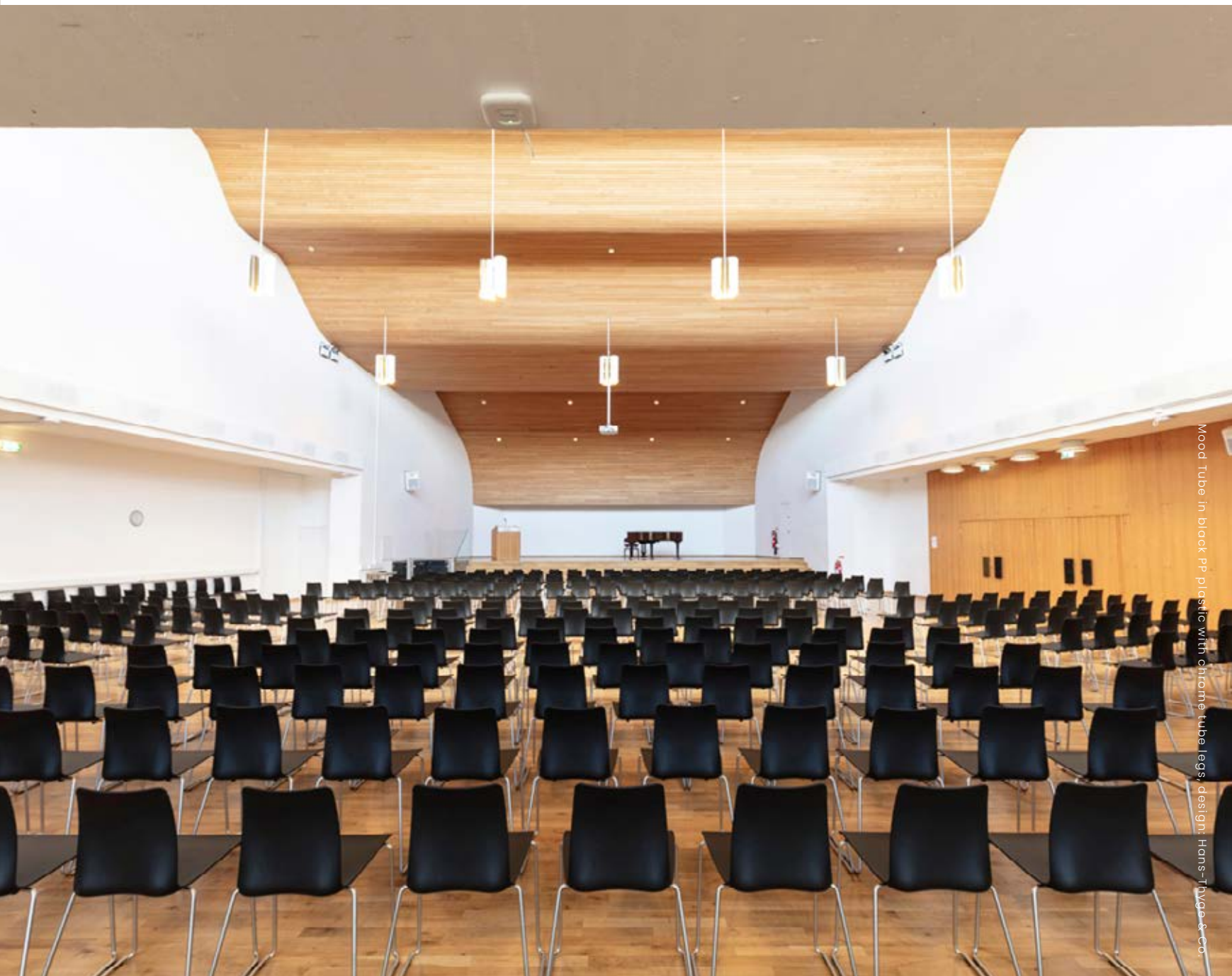
Location: Denmark

Design: Mood Tube chair

Purpose: Conference / Auditorium



Explore all our cases here



Mood Tube in black PP plastic with chrome tube legs, design: Hans-Jürgen & Co



Table trolley

Form and function

We make furniture that, in all its simplicity, fulfils several purposes by virtue of its materials, form and structure. The idea behind each piece of furniture centres around optimising materials in terms of function, the environment and cost. That's why the furniture is designed with as few joints and materials as possible.

Tube Fold table with black table top and base, design: Randers+Radus. Mood Wood chair with black legs and black PP plastic seat, design: Hans-Thyge & Co.





Tube Fold table, 160x80 cm with black table top and base, design: Randers+Radus. Mood Conference chair with upholstery Flord 2 0562 from Kvadrat, base in black, design: Hans-Thyge & Co.



T8 table, 150x127 cm with table top in black linoleum with oak whitepig. matt lacquer edge and base in oak, whitepig. matt lacquer, design: Andraa Weitz & Jens Wendland. Scope armchair with upholstery Remix 3 0242 from kvadrat and base in black metal, stethoscope in zinc, design: Hans-Tryge & Co.



Scope chair with back in oak, black lacquer, black base and upholstery Flord 991 from Kvadrat, stethoscope in black, design: Hans-Thyge & Co.





CASE

UNDA – Horsens, Denmark

At UNDA, a seductive and spectacular restaurant in the heart of Horsens, the vision is to create a feeling of being able to be anywhere in the world. UNDA was initiated in 2022 and today, it's a fascinating and universe where you can forget about time and place for a while and enjoy a tasteful food experience.

The interior is designed in collaboration with Kaki Spaces, who have focused on creating an inviting and extraordinary place that refers to UNDA's natural surroundings close to the water, while at the same time sending your thoughts on a fantastic journey when you enter the restaurant.

"Scope is a chair with a raw and fresh design, combining comfort and elegance. The chair maintains a distinct presence without drawing attention. Scope exudes self-awareness, acknowledging its unique qualities."

Anni Gram, Kaki Spaces



scope armchair



FACTS:

Company: Restaurant UNDA

Location: Horsens, Denmark

Design: Scope chair

Purpose: Restaurant

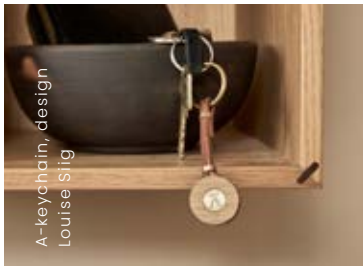
Architect: Kaki™Spaces

Explore all our cases here





Scope armchair with upholstered seat, Proof 0010 from Kyadrat, back in oak, black lacquer, frame in black. Stethoscope in brass, design: Hans-Thyge & Co



A-keychain, design
Louise Siig

Create your own bookcase

The S10 modules is a versatile piece of furniture, both as a sculptural and functional part of the home decoration.

The square modules can be arranged in various combinations only using the 2 different modules and shelves, that can be placed different in each module.



S10 signature in oak, whitepig. matt lacquer, design: Andersen Design Team



S10 Signature in oak, whitepig. matt lacquer, design:
Andersen Design Team. LCI lounge chair with upholstered seat
in black leather Sevilla 001 and base in oak, whitepig. matt
lacquer, design: Andersen Design Team

T1 meeting table, 800x160 cm with table top black linoleum, base in oak, whitepig. matt lacquer, design: byKATO. AC2 chair in oak, whitepig. matt lacquer, seat in black leather, design: byKATO





ADI table round, Ø120 cm with table top in laminate, colour Alpino, base in oak, whitepig. matt lacquer, design: Andersen Design Team. AC2 chair with upholstery Canvas 2 224 from Kvadrat and legs in oak, whitepig. matt lacquer, design: byKATO







AD1 high table, 220x80 cm with table top in Fenix laminate, colour Beige Arizona and base in oak, whitepigment, matt lacquer, design: Andersen Design Team. Scope barstool, H78 cm with oak seat and base in Light Sandy Grey, design: Hans-Thyge & Co. Collect Pinboard L, design: says who. A-Organizer 1 & 2, in oak, whitepigment, matt lacquer, design: Charlotte Hønge



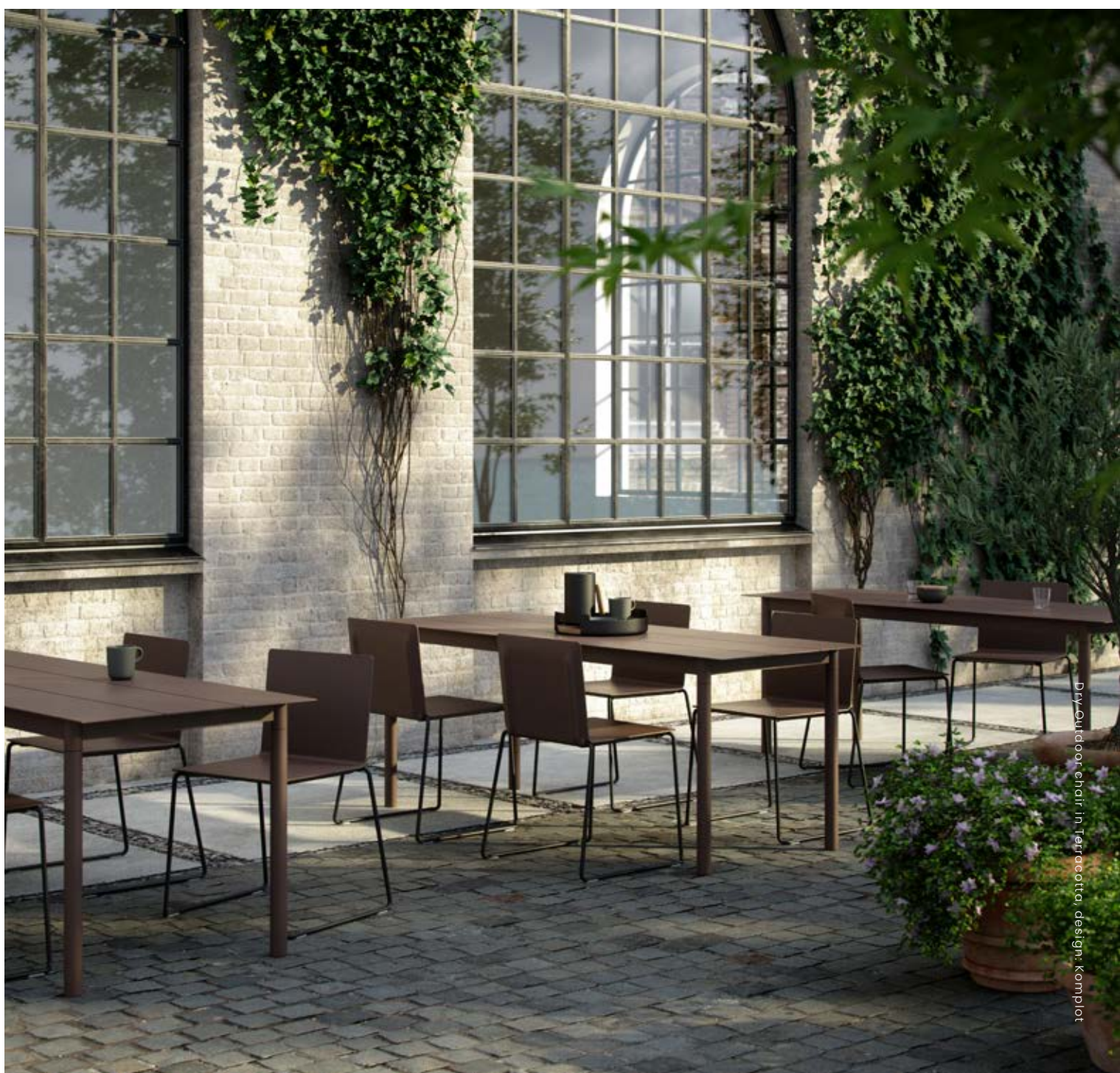
Key Cabinet in oak, design: Louise Slij. Multi Hooks in oak, design: Soys Who. ADJ bench, 200x40xH45 cm in oak, whitepig. matt lacquer, design: Andersen Design Team

Dry Outdoor chair in various colours with frame in black, design: Komplot



Let's go outside

Sitting outside is an exceptional way to enjoy nature's beauty and find inner peace. The sound of rustling leaves and birdsong creates a soothing symphony that invites the mind to relax and savor the moment. The fresh air fills the lungs and revitalizes, while the warm rays of the sun reaches the skin and awakens the senses.



Explore our showroom

We have made a unique showroom spanning over 400 m2 across two floors, expertly blending exceptional surroundings and functional furniture designs, along with inspiring perspectives on Scandinavian contract furniture.

We are thrilled to show you our flagship
but be aware of: Visitors only by prior arrangement

Please call us at +45 27 40 08 08
Bredgade 23A, 1st floor, 1260 Copenhagen K



FACTS:

Opening hours: Visitors only by prior arrangement

Booking: +45 27 40 08 08

Showroom: 430 m2

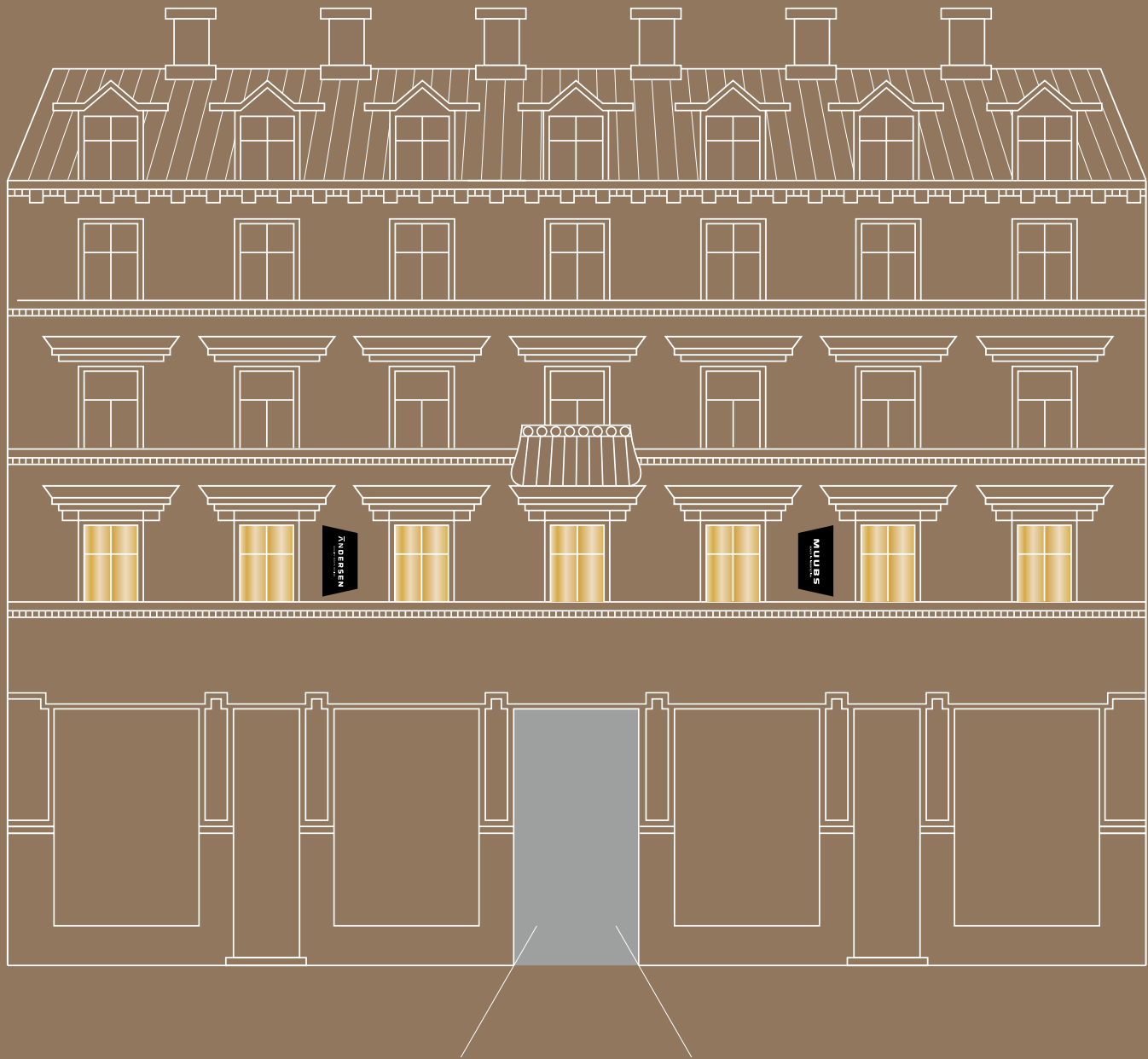
2 floors

Lots of inspiration

Address: Bredgade 23A, 1st floor,

1260 Copenhagen K

in Bredgade, Copenhagen





Andersen Furniture
- A part of Design Concept Denmark

Zeta 1 · 8382 Hinnerup · Denmark
+45 27 40 08 08
andersen-furniture.com

ANDERSEN

QUALITY MEETS DESIGN